

# **XO**

## **AMBIDEX SUCTION HOSE HOLDER**

YB-705  
Version 1.00

XO CARE A/S  
Usserød Mølle  
Håndværkersvinget 6  
DK 2970 Hørsholm  
Denmark

+45 70 20 55 11  
info@xo-care.com  
www.xo-care.com





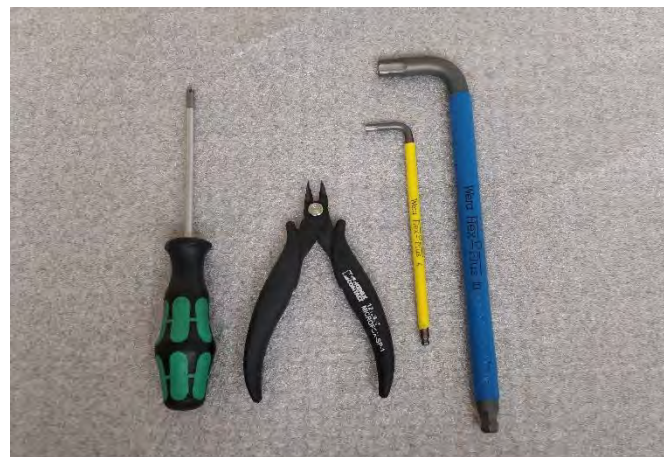
**WARNING:**

When making changes and handling electronics in the XO 4 Unit – always use ESD antistatic wristband (UC-600).



**Tools:**

- Nippers
- Torx 25 Torque tool
- Hex key size 4 and 10



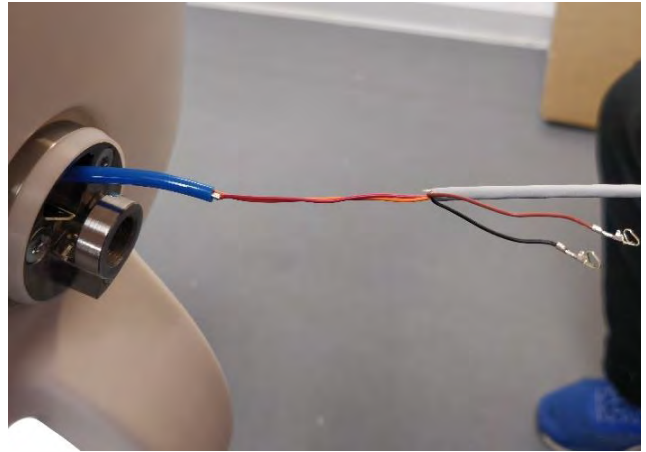
The complete Ambidex suction hose holder.



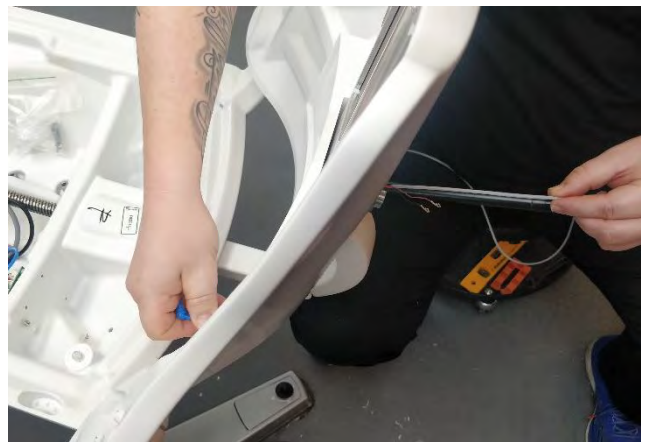
Remove the connector housing from the suction hose wires.

Attach the wires from the suction holder to the blue guide tube as illustrated.

2 wires are pressed into the blue guide tube, 2 wires are pointing backwards.



Gently guide the cable through the backrest.



Position the washers on the hex nut as illustrated.



Mount the suction holder with the hex nut.



Adjust the friction of the suction holder with the hex nut and a hex key size 10. The friction should be equal to 1kg when using a dynamometer/fish weight.

Alternatively, position the suction holder horizontally with the suction hoses in the holder and adjust the friction to a point where the suction holder can hold the weight of the hoses and not fall.



When the hex nut is adjusted to the desired friction, lock it in place with the locking screw located in the middle of the hex nut and a hex key size 4.

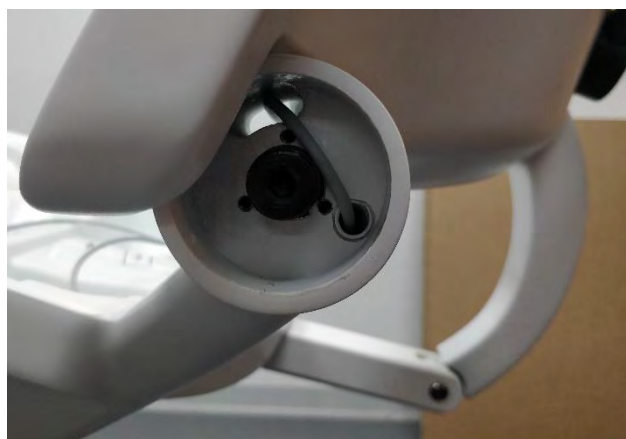
Please note that the friction will typically decline approx. 100g when the locking screw is tightened. The final friction should be equal to 0,9kg.



Route the cable as illustrated.



Route the cable as illustrated.

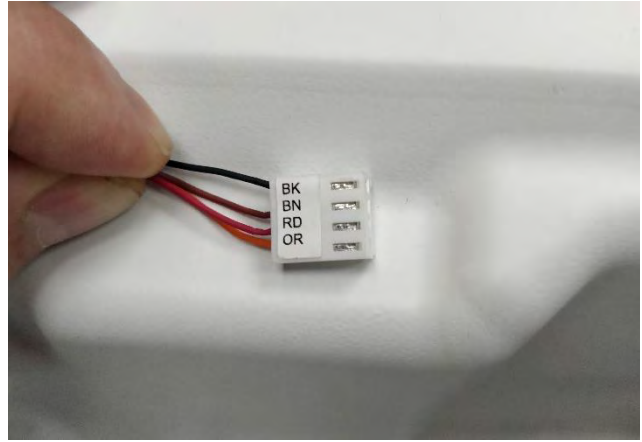


Route the cable as illustrated.

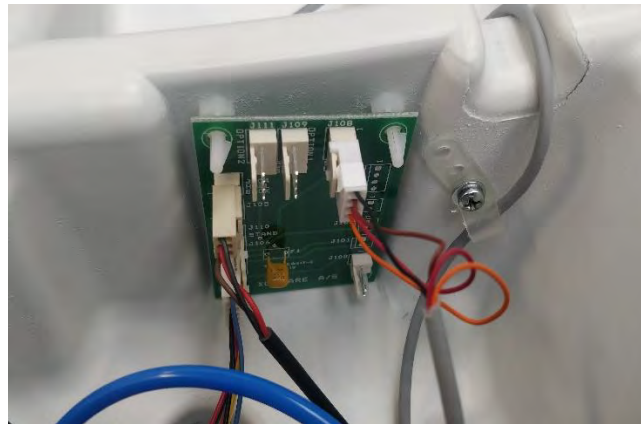


Fit the 4 wires in the plug.

Black=BK  
Brown=BN  
Red=RD  
Orange=OR



Connect the cable to connector J108 on the chair PCB.



The slots in the suction holder are different sizes.  
Please make sure the holder for the small suction hose (small slot) is located closest to the chair.



Check the function of the suction holder.

In case the suction hoses do not activate/deactivate as intended, please check the adjustment of the suction holder sensor PCB:

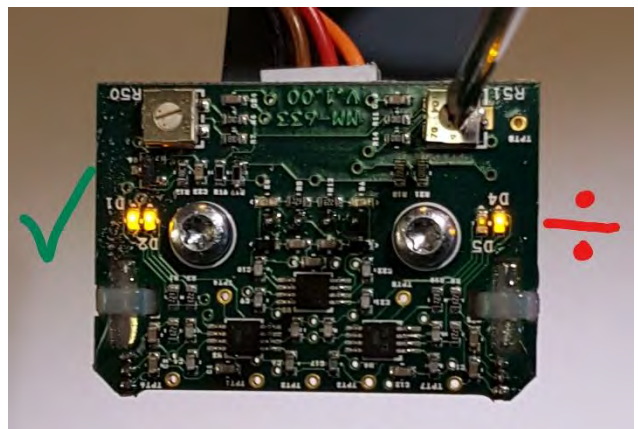
Switch the unit off

Remove the plastic part by removing the 4 screws illustrated.

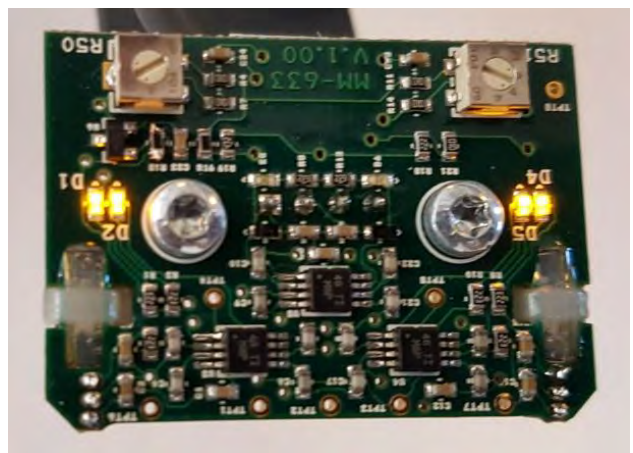


Switch the unit on.

To ensure that the sensitivity of the PCB is optimal, please adjust R50 until diode D1 and D2 are equally bright. Perform the same adjustment on R51 for diode D4 and D5.



When the four LEDs are equally bright, switch the unit off.





Refit the plastic part while taking care of not bending the sensor components.

Check the function of the suction holder and verify it is working properly.

